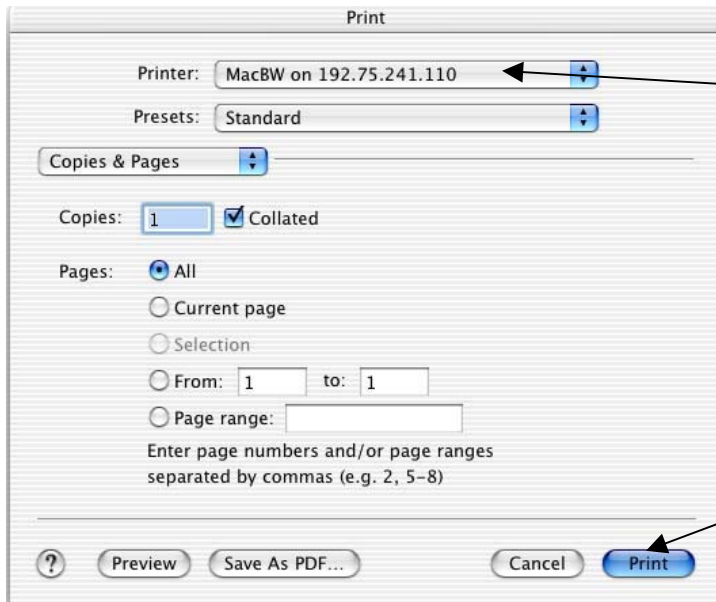


These instructions will inform you how to **print** your document from the **MAC** at SFU Harbour Centre. **Multiple-pages** and **Double-sided** printing instructions are also included.

When ready to print, click on **File** then click **Print**. The following window will appear:

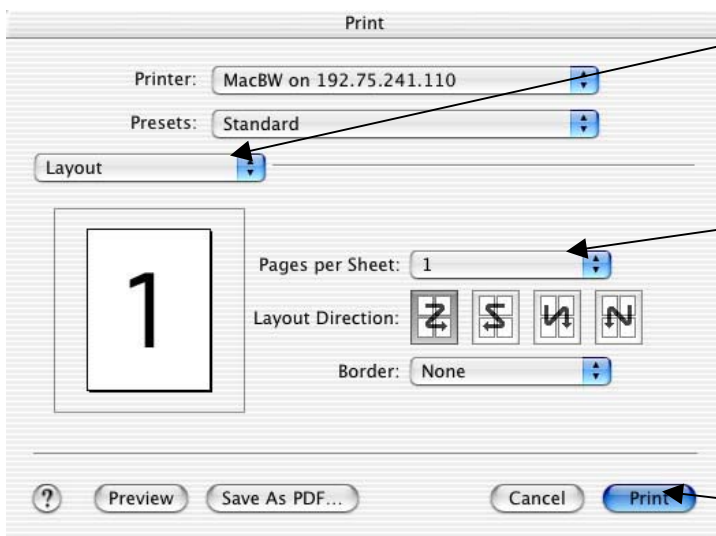


In the drop down **Printer** list, select:

- for Black&White: **MacBW**
- for Color: **MacColor**

Click **Print** to send your print job to the printer.

To do **Multiple-pages** printing, switch the Print screen to **Layout** using the scroll-arrows:



Change **Pages per Sheet** using the scroll-arrows for **Multiple-pages** printing.

Click **Print** to send your print job to the printer.

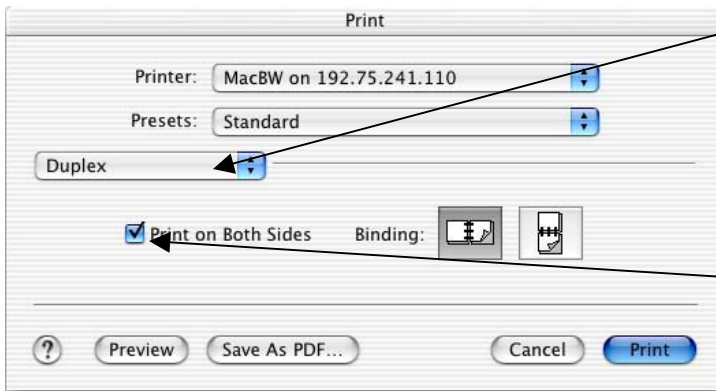


# MAC Printing with Multiple-Pages and Double-Sided at SFU Harbour Centre.

© January 29, 2004

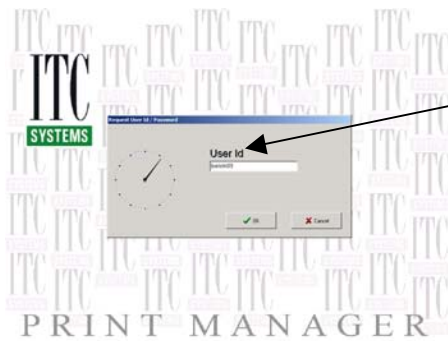
These instructions will inform you how to **print** your document from the **MAC** at SFU Harbour Centre. **Multiple-page** and **Double-sided** printing instructions are also included.

To do **Double-sided** printing, switch the Print screen to **Duplex** using the scroll-arrows:



Check mark the **Print on Both Sides** box for **Double-sided** printing.


Once you click **Print**, go to our printer release console (**Room 1340**) in order to release your document(s). Insert your printing card in the card reader to see the following window appear (*printing card may be purchased from the card dispenser in room 1340*):



Enter **your SFU ID** and click **OK**.  
(*your SFU ID is used initially to login to your computer*)



Select your document(s) by double-clicking on your print job then click on the **Print** button.



Our black & white printer is HP LaserJet 9000 and it costs **\$0.11** per page.